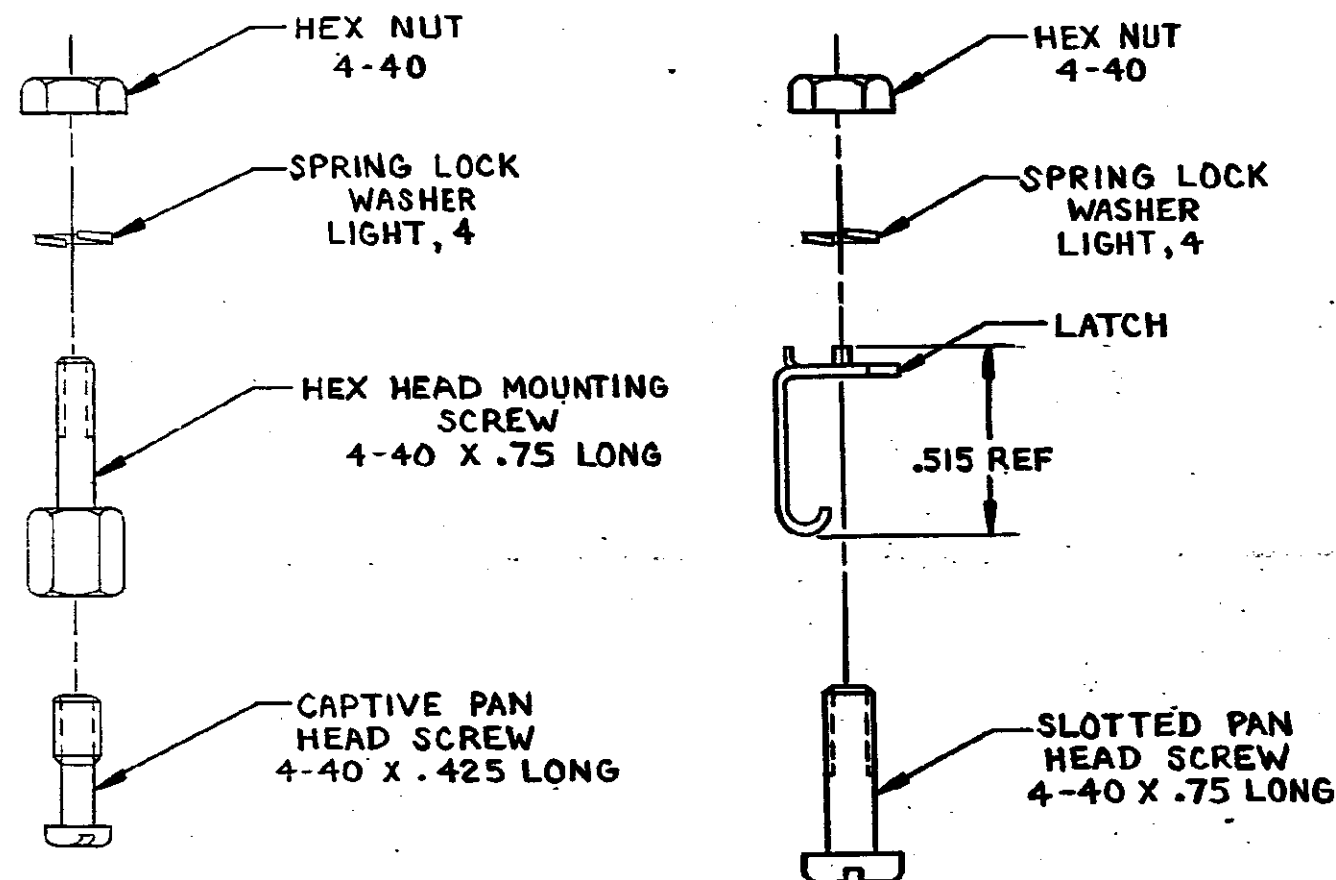


THIS DRAWING IS UNPUBLISHED. RELEASED FOR PUBLICATION . 19 .

© COPYRIGHT 1977 BY AMP INCORPORATED, HARRISBURG, PA. ALL INTERNATIONAL RIGHTS RESERVED. AMP PRODUCTS MAY BE COVERED BY U.S. AND FOREIGN PATENTS AND/OR PATENTS PENDING.

REVISIONS						
P	F	ZONE	LTR	DESCRIPTION	DATE	APPROVED
B			B	REV PER ECN AA-4246	02/08/81	<i>dm</i> TC



⚠ MATERIAL: CAPTIVE PAN HEAD SCREW-ZINC PLATED STEEL.

HEX HEAD SCREW - BRASS WITH CHROME PLATE.

ALL OTHER HARDWARE - PASSIVATED STAINLESS STEEL.

552690-1 AS SHOWN

UNLESS OTHERWISE SPECIFIED DIMENSIONS ARE IN INCHES. TOLERANCES ON: DECIMALS ± ANGLES ±		CONTRACT NO DR <i>A. Holt 9-24-81</i> CHK <i>MD Friel 9-26-81</i>		PART NO.	
MATERIAL	⚠	APPD <i>D. Wilkerson 10/1/81</i> APPD <i>W. K. Strick 10/1/81</i>	AMP AMP INCORPORATED Harrisburg, Pa.		
FINISH	⚠	DESIGN APPD	NAME KIT, HARDWARE, VERTICAL MOUNTING, CHAMP		
		OTHER APPD	SIZE B	FSCM NO 00779	DRAWING NO 552690
			SCALE 2/1	SHEET 1 OF 1	